

Concept

Hibiya continues to evolve as a mecca of Japanese entertainment culture, highlighting theaters, cinemas, and other forms of stage performances. Inspired by the history of Hibiya, the hotel's design concept, "Stage Art," can be experienced in spaces featuring gorgeous lighting, rugs, artwork, and stage inspired designs spread throughout the 178 guest rooms and suites, lobby, restaurant and bar, executive lounge, fitness center, and meeting room



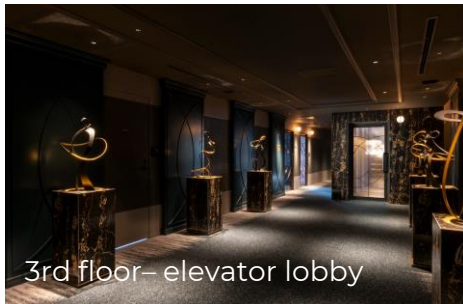
Lobby

The wall is an abstract and dynamic representation of the passion and dynamism of those who perform on stage and all those involved in the production.



Restaurant

Inspired by the movement of ballerina at l'Opéra de Paris



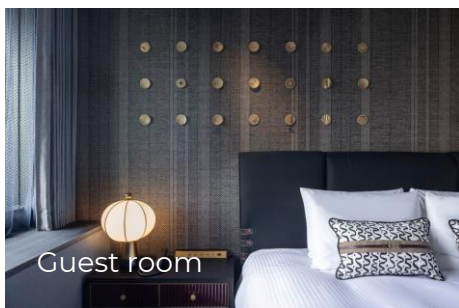
3rd floor- elevator lobby

Abstract and modern objects that represent famous movie actresses in history are, Marilyn Monroe, Audrey Hepburn, Brigitte Bardot, Kate Winslet, Grace Kelly, and Natalie Portman. and Natalie Portman.



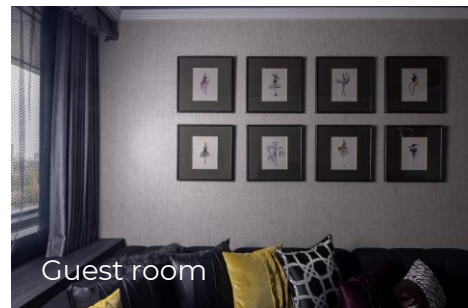
Executive Lounge

The lounge is decorated with a number of books and objects related to movies and theater that you will want to reach for.



Guest room

Inspired by patterns used in Kabuki and Noh costumes and accessories used on stage. Decorations on the walls.



Guest room

The walls of the suites are decorated with embroidery inspired by the beautiful costumes of stage actresses.